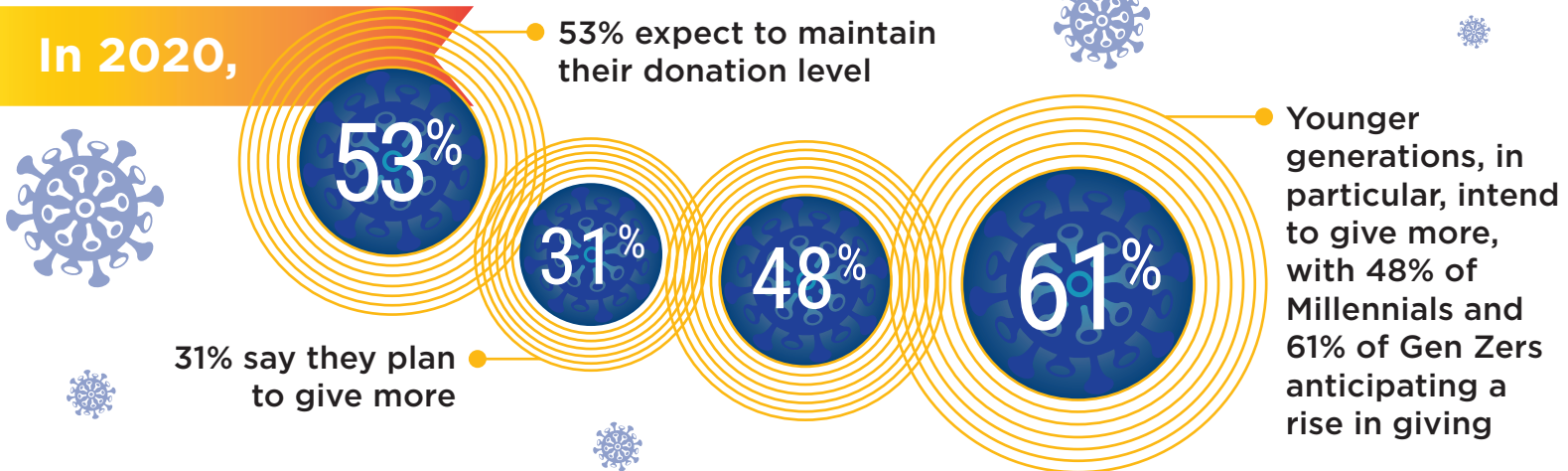


COVID-19 and the Charitable Sector

The COVID-19 (coronavirus) outbreak is placing tremendous pressure on charities, but the empathy and generosity of donors could rise to the challenge!

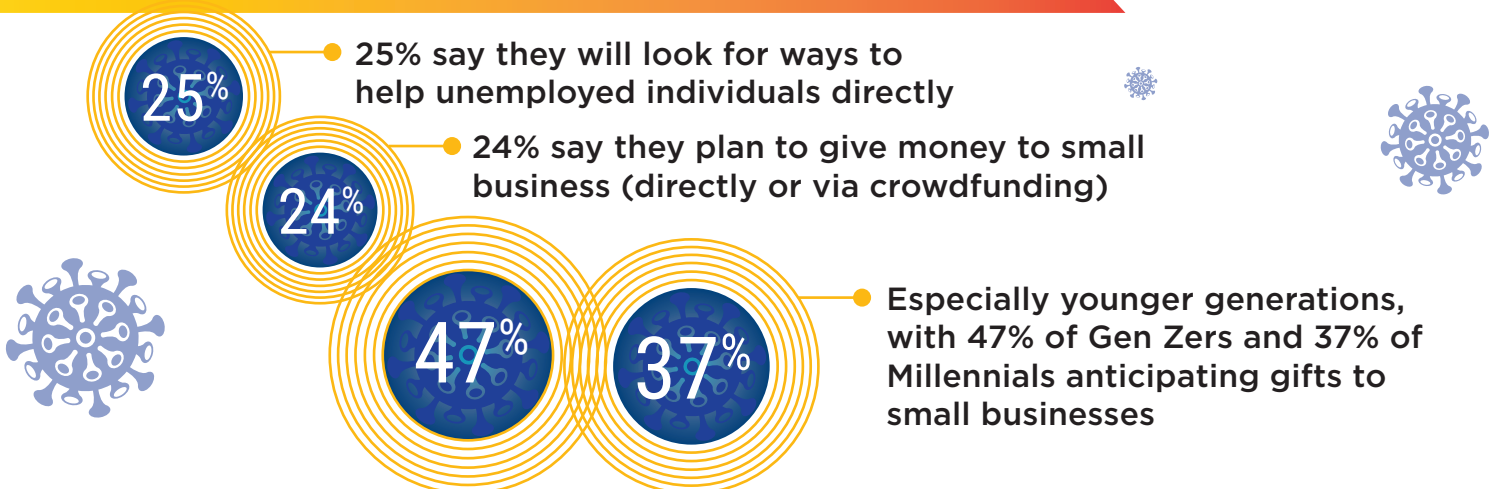
In 2020,



Of donors who expect to give less this year,



Donors generosity may also be redirected



Stay close to the charities you care about. This is a critical time to show support. **To find trusted charities, visit Give.org**